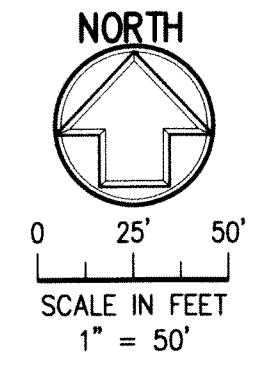
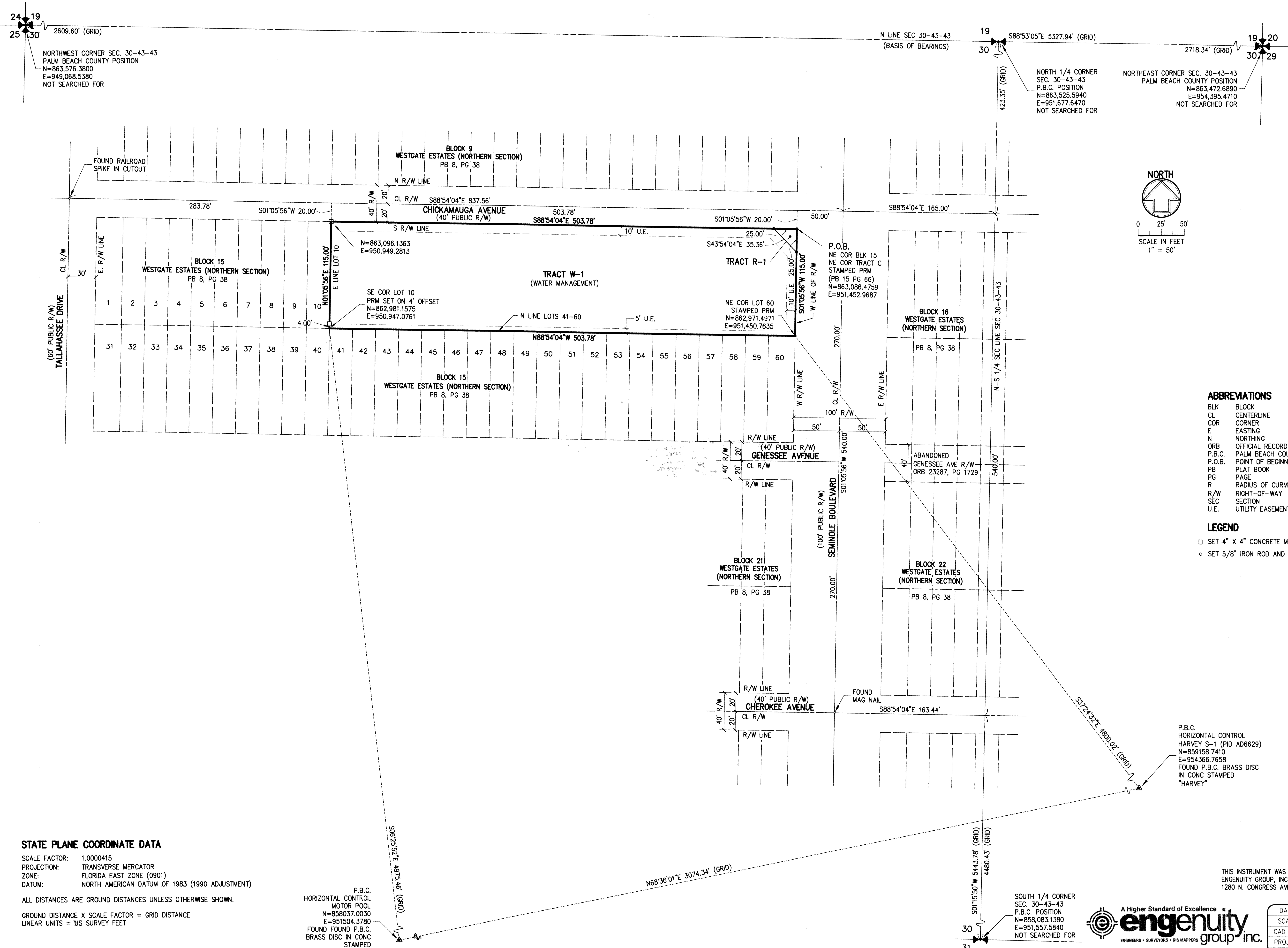


BABBLING BROOK

BEING A REPLAT OF A PORTION OF BLOCK 15, "WEST GATE ESTATES (NORTHERN SECTION)", PLAT BOOK 8, PAGE 38, AND ALL OF TRACT C, "REPLAT OF PART OF BLOCKS 11, 14, 15, 29, 41, 51, 52 & 54 WEST GATE ESTATES", PLAT BOOK 15, PAGE 66, PUBLIC RECORDS OF PALM BEACH COUNTY, FLORIDA, LYING IN SECTION 30, TOWNSHIP 43 SOUTH, RANGE 43 EAST, PALM BEACH COUNTY, FLORIDA,

39



ABBREVIATIONS

- BLK BLOCK
- CL CENTERLINE
- COR CORNER
- E EASTING
- N NORTHING
- ORB OFFICIAL RECORDS BOOK
- P.B.C. PALM BEACH COUNTY
- P.O.B. POINT OF BEGINNING
- PB PLAT BOOK
- PG PAGE
- R RADIUS OF CURVE
- R/W RIGHT-OF-WAY
- SEC SECTION
- U.E. UTILITY EASEMENT

LEGEND

- SET 4" X 4" CONCRETE MONUMENT PRM LB6603
- SET 5/8" IRON ROD AND CAP LB6603

STATE PLANE COORDINATE DATA
 SCALE FACTOR: 1.0000415
 PROJECTION: TRANSVERSE MERCATOR
 ZONE: FLORIDA EAST ZONE (0901)
 DATUM: NORTH AMERICAN DATUM OF 1983 (1990 ADJUSTMENT)

ALL DISTANCES ARE GROUND DISTANCES UNLESS OTHERWISE SHOWN.
 GROUND DISTANCE X SCALE FACTOR = GRID DISTANCE
 LINEAR UNITS = US SURVEY FEET

P.B.C.
 HORIZONTAL CONTROL
 MOTOR POOL
 N=858037.0030
 E=951504.3780
 FOUND FOUND P.B.C.
 BRASS DISC IN CONC
 STAMPED
 "MOTOR POOL"

THIS INSTRUMENT WAS PREPARED BY: JOHN J. RICE, P.S.M. IN THE OFFICE OF ENGENUITY GROUP, INC. CERTIFICATE OF AUTHORIZATION NO. LB6603
 1280 N. CONGRESS AVE, SUITE 101 WEST PALM BEACH, FLORIDA 33409

A Higher Standard of Excellence

 ENGINEERS • SURVEYORS • GIS MAPPERS
 1201 BELVEDERE ROAD, WEST PALM BEACH, FLORIDA 33405
 PH (561) 655-1151 • FAX (561) 832-9390 • WWW.ENGENUITYGROUP.COM

DATE	09/29/2021
SCALE	1" = 50'
CAD FILE	14162.01.22_Koehler_Plat
PROJECT	14162.01.22
DRAWN	J. RICE
CHECKED	J. MALIN

SHEET NO.	2/2
14162.01.22	

Y:\Land Projects\R2\14162.01.22 Babbling & Koehler\dwg\14162.01.22 Babbling Plat.dwg 9/10/2021 10:51:03 AM EDT